

se révéler  
se révéler  
se révéler



**WELCOME**

**GUIDE**



**2025 - 2026**



# CONTENTS

## INTRODUCTION

The Vice Dean of International Affairs welcomes you	<b>P.4</b>
Where are you studying?	<b>P.6</b>
Welcoming you at Rennes	<b>P.8</b>

## ORGANIZATION OF STUDIES

Administrative registration	<b>P.10</b>
Academic calendar	<b>P.11</b>
Course offer	<b>P.12</b>
Learning agreements	<b>P.12</b>

## FRENCH AS A FOREIGN LANGUAGE (FLE)

Exchange students	<b>P.13</b>
Master students	<b>P.13</b>

## ACADEMIC ASPECTS

Grades system	<b>P.14</b>
Initial and resit exams	<b>P.15</b>
European credit transfer system (ECTS)	<b>P.16</b>
ENT/ School's intranet	<b>P.16</b>
Moodle / Online teaching platform	<b>P.16</b>
Microsoft Teams	<b>P.17</b>
Online classes (Zoom, Teams, BigBlueButton)	<b>P.17</b>
"Forum Entreprises" and career-related events	<b>P.18</b>
IGR Alumni	<b>P.19</b>



# CONTENTS

## YOUR DAILY LIFE AT IGR-IAE RENNES

International team	P.20
Reception desk	P.22
Cafeteria	P.23
Study rooms: how to book them?	P.23
Computer rooms: how to print?	P.24
Cleanliness & Responsibility	P.24
Smoking policy	P.24
Religion policy	P.25
Violence & Harassment	P.25
University libraries & Study halls in Rennes	P.26
Associative life	P.26

## LIVING IN RENNES

Health issues	P.28
Administrative procedures	P.28
Sports and cultural activities	P.29
Safety advice	P.30
Transports	P.32
Buying food	P.33
Looking for affordable goods for your daily life?	P.34
Other tips	P.34
Emergency services	P.38

SOCIAL MEDIA	P.39
--------------	------



# INTRODUCTION

## The Vice Dean of International Affairs welcomes you

Dear Student,

It is my great pleasure to welcome you at IGR-IAE Rennes Graduate School of Management of the University of Rennes.

You're about to embark on an exciting international and intercultural journey, joining a vibrant and diverse community of students from around the world. By choosing to study at IGR-IAE Rennes, you're stepping into an environment of academic excellence, driven by high-quality teaching and recognized research. This institution is dedicated to providing an environment that supports intellectual curiosity, facilitating the advancement of knowledge in management.

Our international programs are led by dedicated and experienced faculty members who bring a global perspective to the classroom. We encourage you to make the most of the rich learning opportunities available to you. Our entire academic and administrative team is here to support and guide you throughout your journey.





## INTRODUCTION

Beyond the classroom, I invite you to discover the cultural heritage and natural treasures of Rennes and the Brittany region. Take time to engage with local life and build lasting relationships with your classmates.

This guide has been designed to help you prepare for your arrival and make the most of your time at our school. I wish you a smooth arrival in Rennes and a rewarding and enriching experience at IGR-IAE Rennes.

Best wishes,

Dr. Laura Sabbado Da Rosa

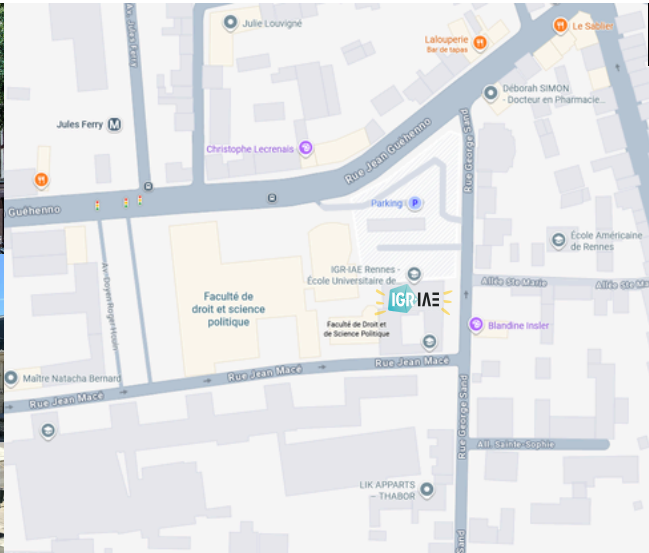




# INTRODUCTION

## Where are you studying?

IGR-IAE Rennes Graduate School of Management is part of the University of Rennes, a State-owned multidisciplinary university. The University of Rennes was founded in the 15th century and brings together training departments (UFR, faculties, schools, institutes), 35 research centres and 5 Grandes Écoles (EHESP, ENSCR, ENS Rennes, INSA Rennes and Sciences Po Rennes). Every year, more than 37,000 students are welcomed at the University of Rennes by 4,500 employees on 9 campuses.





## INTRODUCTION

IGR-IAE Rennes was founded in 1955. Its mission has been to foster the development of entrepreneurial spirit in Brittany through quality training (undergraduate, graduate and doctoral studies) in management and business sciences.

The international development of our school has always been at the centre of our strategy, offering many international mobility possibilities to its students.

IGR-IAE Rennes offers 5 fully taught in English and State-recognized Management.

This year, our school celebrates its 70th anniversary!





# INTRODUCTION


## Welcoming you at Rennes

We will do our best to welcome you at Rennes and invite you to our school's busy life. Feel free to get in touch with our teaching and administrative staff: program directors and coordinators, teachers, admissions' office, international office, FLE teachers, etc.

Associative life is one of IGR-IAE Rennes's strongest assets (see page 20): you will have the opportunity to attend several major associative events in September and throughout the year. The calendar will be presented soon.

In addition, in a city welcoming 7,000 international students, many opportunities are offered to meet other students and participate in cultural and sporting events. The University of Rennes also organizes a **Welcoming Forum on September 16th**.

On the administrative side, the Center for International Mobility (Centre de Mobilité Internationale – CMI) can guide you step-by-step on issues such as visa renewal, health registration, or accommodation research. Please, don't miss their **International Students' Day on September 4th** in the afternoon (Cité Internationale Paul Ricoeur, 11 boulevard de la Liberté), taking place after your **Welcoming Day at IGR-IAE Rennes** in the morning.

 02 22 51 44 20

 [facebook.com/CMIRennes](https://facebook.com/CMIRennes)

 @CMIRennes

 @CMIRennes







## ORGANIZATION OF STUDIES


In September, you will have many opportunities to be in touch with the program coordinators and our incoming student coordinator. Meetings with your program directors will also be organized to present the calendar and exams organization. Your French as a Foreign Language (FLE) professors will also be available for any question.

**Please, feel free to contact us for any question or difficulty you may encounter.** Solutions, ideas, support will be offered.

In this guide, some information be particularly interesting for specific categories of students, identified by the following icons:

Exchange students 

Master students 

Topics detailed during welcoming day 



# ORGANIZATION OF STUDIES

## Administrative registration



Your registration details from the Applying platform (Master students) or the Mobility Online platform (exchange students) have been transmitted to the **Admissions Office** (« Service Scolarité » in French).



Exchange students will receive their University of Rennes student card upon presentation of the documents listed by the program coordinators.



Master students will receive their student card after completing your registration (document review and complete payment of their tuition fee and CVEC fee).

The **Admissions Office** is your main contact for registration and administrative affairs, exams organization, grades and degrees.



### Office location

Ground floor

Left side of the IGR-IAE Rennes building

Closed on Friday afternoons

Door Number 031





# ORGANIZATION OF STUDIES

## Academic calendar

Fall semester	BA 3rd Year	Master 1st Year	Courses in English
Lectures	Sep. 1 - Dec. 19, 2025	Sep. 1 - Dec. 19, 2025	Sep. 1 - Dec. 19, 2025
Exams	Jan. 5-9, 2026 (+ anticipated test: Nov. 24, 2025)	Dec. 15-19, 2025 (+ anticipated test: Dec. 01, 2025)	Dec. 15-19, 2025 (+ anticipated test: Dec. 01, 2025)
All Saint's break	Oct. 19 to Nov. 2, 2025	Oct. 19 to Nov. 2, 2025	Oct. 19 to Nov. 2, 2025
Christmas break	Dec. 21, 2025 - Jan. 4, 2026 (2 weeks)	Dec. 21, 2025 - Jan. 4, 2026 (2 weeks)	Dec. 21, 2025 - Jan. 4, 2026 (2 weeks)
Spring Semester	BA 3rd year	Master 1st year	Courses in English
Lectures	Jan. 12 - Apr. 17, 2026	Jan. 12 - Mar. 28, 2026	Jan. 5 - Apr. 30, 2026
Exams	Apr. 27 to Apr. 30, 2026	Mar. 23 to Mar. 27, 2026 (+ anticipated test: Mar. 11, 2026)	March/April 2026 (+ anticipated test: Mar. 23, 2026)
Winter Break	Feb. 22 to Mar. 1, 2026	Feb. 22 to Mar. 1, 2026	Feb. 22 to Mar. 1, 2026
Resit Exams	June 15 to 19, 2026 (both Semesters)	May 26 to 30, 2026 (both Semesters)	June 15 to 19, 2026 (both Semesters)



# ORGANIZATION OF STUDIES

## Courses offer



Depending on your proficiency in French and English (at least B2 in both cases), you can choose courses at Bachelor 3 or Master 1 levels.

Please note that exchange students cannot obtain a University of Rennes final degree, unless a specific double degree partnership exists with their home university.

Students fill in an online form to choose their courses either in French or English.

For a better organization, only courses at a same level and in the same subject are allowed. Any specific situation will be examined individually.

## Learning agreements



Learning agreements should be submitted to the incoming student coordinator for validation and signature by academic authorities.



Incoming exchange students are allowed to modify their course selection until October 15th





# FRENCH AS A FOREIGN LANGUAGE (FLE)



## Exchange students

**Our incoming exchange students can benefit from one semester of free classes of French as a Foreign Language** (44 hours – 2 classes per week) during the fall or spring semester. The second semester costs €150.

Thanks to this offer, even total beginners in French can come to Rennes and manage their daily life in France.

These courses are given at the **CIREFE** (Centre International Rennais d'Études de Français pour Étrangers) on the University of Rennes 2 - Villejean campus. They are organized by group of level and the incoming students' coordinator is coordinating the registrations.



## Master students

**Our Master students can benefit from 250 hours of FLE** over the 2 years of the full Master's degrees, or during the 1-year Master 2 Master of Finance. Groups are organized by level of fluency. A level test has been organized during the summer or will take place on September 5th. Students are prepared for the DELF, the internationally recognized French language examination, held at the end of the academic year.

**Two weeks** of intensive FLE training are taught in September, **one week** in December and **two weeks** in April. Outside these intensive periods, 8 hours per week are planned.

**Activities and day trips** are organized by the FLE teachers in order to discover Rennes and its surroundings and get the best cultural experience.

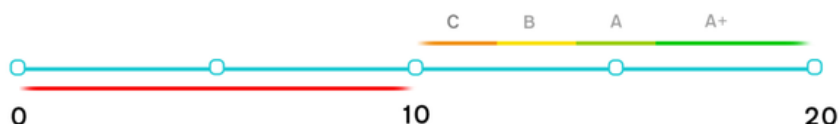


## ACADEMIC ASPECTS

### Grades system

In France and at IGR-IAE Rennes, grades are ranked on a **0-20 scale**. The grading scale goes from 0 points, the bottom grade (or “no show”) to 19-20 points, the top grades for outstanding performances, however rarely awarded. The passing grade is 10, leading to a resit exam if the grade ranks from 0 to 9.9.

The following figure shows equivalences with the alphabetical grade system with top rankings A+ (17-20), A (15-16), B (12-14) and C (10-11).



At the end of each semester, after the examination board review, you will be notified of the availability of your grades on your digital workspace.



## ACADEMIC ASPECTS

### Initial and resit exams

“Knowledge assessment methods” (Modalités de Contrôle des Connaissances – MCC) are the examination regulations for each diploma. The Admissions Office implements these MCC by organizing exams, collecting grades and issuing grade transcripts.

An exam period is scheduled **at the end of each semester** with written exams. Other grades (continuous assessment) will be included in your final grade.

Each professor will inform their students of the examination procedures for their course. You will receive the exact examination dates at least two weeks before the exams week.

Students with a grade average under 10 out of 20 will not validate the teaching unit. They are allowed to take resit exams (second sessions) to improve their grade average. Procedures for resit exams will be notified in due time. As the grade average is reviewed at the teaching unit level, individual exams with grades under 10 can be compensated by grades from other courses, allowing the students to validate their teaching unit without resit exams.



Resit exams will be held at the end of each semester.



The second session may take place as late as September.



## ACADEMIC ASPECTS

### European credit transfer system (ECTS)



During the Master studies, 30 credits are allocated for each validated semester, and 60 credits for an entire year. The credits are listed on the final transcript.



Credits are listed in the course offer. Grades will be processed and ECTS validated by the home university.

### ENT/ School's intranet



As soon as your **administrative registration is finalized** at the Admissions Office ("Service Scolarité"), you will be notified on your personal email address in order to access the University of Rennes' ENT (intranet/digital workspace) and validate its settings. **Your ENT is an essential dashboard for your daily life as a student in Rennes**, where you will find important information, schedules, emails, intranet, IT issues, etc. For any question, feel free to get in touch with the students' coordinators.

**Check your schedule every day** on your ENT. There could be last-minute changes you might not be aware of.

### Moodle / Online teaching platform

Moodle is an **online teaching platform** used by the University of Rennes. Documents from your professors (teaching material, exercises, course presentations), coursework submissions, online classes organization... are handled on Moodle.

Go to the ENT homepage (see QR code above), and select "Cours en ligne sur Moodle" in the "Formation - Insertion pro" tab.





## ACADEMIC ASPECTS

### Microsoft Teams



The University of Rennes uses Microsoft Teams for information purposes, file sharing... You will be added to several Teams groups and conversations throughout the year.

For instance, a lot of valuable information is posted by the international staff regarding varied topics such as cultural events going on in Rennes, how to print, administrative issues (registrations, housing benefits, bank account...), as well as insightful information on internship search and its legal aspects.



### Online classes (Zoom, Teams, BigBlueButton)

The most common tools used by our professors for online classes are **Teams, Zoom and BigBlueButton (BBB)**. You will receive connection links on your University of Rennes email address (ENT).





## ACADEMIC ASPECTS

### “Forum Entreprises” and career-related events

IGR-IAE Rennes organizes the **Career Week from November 17th to 21st, a whole week of career-related events**, to help you prepare the next steps of your career. You will attend workshops, conferences and meetings with alumni.

This is the opportunity for you to:

- Upgrade your curriculum
- Discover the French job market and application practices
- Meet with professionals and recruiters
- Develop your professional network
- Start your internship research

The final event of the Career week is **the Forum Entreprises on November 27th, where 60 companies and recruiters come to meet our students** and recruit some of them for internships and jobs.



The Master students' schedules include several events related to this career week.



The incoming students' schedules will be adapted during that week.



## ACADEMIC ASPECTS

### IGR Alumni

IGR-IAE Rennes has a **strong network of 23,000 graduates** through the IGR Alumni association.

In addition to sharing hundreds of jobs offers with our students, the IGR Alumni association offers many opportunities to meet graduates in various settings: direct meetings, conferences, company visits...

IGR Alumni has its own **LinkedIn Page** with more than 2,600 members, its own website and a mobile app to follow the latest news of the association and keep your professional network active.



#### Contact

Léna **GLEHEN**



02 23 23 78 63



igr-alumni@univ-rennes.fr





# YOUR DAILY LIFE AT IGR-IAE RENNES

## International team

The international team is coordinated by the Vice Dean for international affairs:

- Academic coordinators for university cooperation in dedicated geographical areas: Europe, North America, South America, Africa, Asia and Oceania
- Program directors of the master's degrees
- Administrative team, including the Head of the International Office, the international programs coordinators and the incoming and outgoing mobility coordinators.



**Dr. Laura SABBADO DA ROSA**  
Academic coordinator for Latin America,  
Africa, Asia (excl. Japan) and Oceania  
[laura.sabbado-da-rosa@univ-rennes.fr](mailto:laura.sabbado-da-rosa@univ-rennes.fr)

## Academic coordinators



**Dr. Jacques-François DIOUF**  
Academic coordinator for Europe  
[jacques-francois.diouf@univ-rennes.fr](mailto:jacques-francois.diouf@univ-rennes.fr)



**Dr. Sophie LERAY**  
Academic coordinator for North America  
[sophie.leray@univ-rennes.fr](mailto:sophie.leray@univ-rennes.fr)



**Dr. Laura SABBADO DA ROSA**  
Academic coordinator for Latin America,  
Africa, Asia (excl. Japan) and Oceania  
[laura.sabbado-da-rosa@univ-rennes.fr](mailto:laura.sabbado-da-rosa@univ-rennes.fr)



**Pr. Karine PICOT-COUPÉY**  
Academic coordinator for Japan  
[karine.picot@univ-rennes.fr](mailto:karine.picot@univ-rennes.fr)



# YOUR DAILY LIFE AT IGR-IAE RENNES

## Program directors



**Dr. Caroline RUILLER**  
Director, Master 2 IHRM  
caroline.ruiller@univ-rennes.fr



**Dr. Nadia SAGHI**  
Director, Master 2 of Finance ASRF  
nadia.saghi@univ-rennes.fr



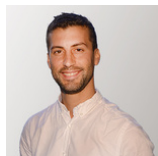
**Pr. Jean-Laurent VIVIANI**  
Co-Director, MASTER AAA  
jean-laurent.viviani@univ-rennes.fr



**Dr. Rebecca DICKASON**  
Director, Master 1 IHRM  
rebecca.dickason@univ-rennes.fr



**Dr. Linoel Touchais**  
Co-Director, MASTER AAA  
linoel.touchais@univ-rennes.fr



**Pr. Matthieu Belarouci**  
Director, Master 1 IM  
matthieu.belarouci@univ-rennes.fr

## Administrative staff



**Romain GUILLARD**  
Department Head  
romain.guillard@univ-rennes.fr  
☎ +33 2 23 23 32 92



**Cecilia THOMAS**  
International program coordinator ASRF  
igr.international-degree@univ-rennes.fr  
Outgoing students coordinator  
igr-international-outgoing@univ-rennes.fr  
☎ +33 2 23 23 47 92



**Pom JACTIN**  
International program coordinator IHRM &  
AAA igr.international-degree@univ-  
rennes.fr  
Incoming students coordinator  
igr-international-incoming@univ-rennes.fr  
☎ +33 2 23 23 60 06



**Aymeric LACHIVER**  
international program coordinator MBAIM  
igr.international-degree@univ-rennes.fr  
Franco-Japanese Center Coordinator  
cfjm@univ-rennes.fr  
☎ +33 2 23 23 77 79



## YOUR DAILY LIFE AT IGR-IAE RENNES

### Reception desk

**English-speaking receptionists** will welcome you every day from 7:15 am until 6:15 pm (except on weekends) and guide you to:

- **Find directions** to a specific room, or other general information on Rennes
- **Get information on your class** if the screen located in the hallway is off
- **Borrow material** (adapters, audio cables...) with a deposit (passport, student card)
- **Book one of the study rooms** (see next page)
- **Return a found object**, or recover one

Please note that the reception desk **cannot be used as a luggage checkroom!** In the entrance hall, you will notice three screens displaying:

- **Classrooms with their schedule**
- **News about IGR-IAE Rennes** or the University of Rennes: visiting professors from abroad, conferences, events...



#### Contact information

☎ +33 2 23 23 77 77

✉ [accueil-igr@univ-rennes.fr](mailto:accueil-igr@univ-rennes.fr)

from 7:15 AM to 6:15 PM





## YOUR DAILY LIFE AT IGR-IAE RENNES

### Cafeteria

The school cafeteria is open from Monday to Friday from 7:30 am and provides snacks, sandwiches, salads, hot and cold drinks.

Vending machines for cold/hot drinks and sweets are also located in this area as well as on the 2nd floor of the building.

Next to IGR-IAE Rennes, two CROUS-run university restaurants «RU» (dining halls) offer affordable (about €3,50) regular three-course meals:

- **RU Fougères (46 Rue Jean Guéhenno)**
- **RU Hoche (2 Rue Lesage)**



### Study rooms: how to book them?

In order to work on group projects, you can book a study room. They are located on the ground floor or 2nd floor. Reservations should be made at the reception desk ([accueil-igr@univ-rennes.fr](mailto:accueil-igr@univ-rennes.fr)) **at the latest before 6 pm on the day before.**



## YOUR DAILY LIFE AT IGR-IAE RENNES

### Computer rooms: how to print?

**The Korrigo card's services:** in addition to its regular use as a bus and metro card, this multi-service card includes printing, access to the University's libraries, sports, CROUS-run cafeterias and dining halls ("RU"). More details will be given by the program coordinators during the Welcoming Day.

Several computers are available in rooms 214 and 215 where you can freely work, print documents, etc. Students from the Master in Finance can access the Bloomberg Lab, in the same room.

### Cleanliness & Responsibility

Out of respect for your classmates and the cleaning staff, **please do not have lunch or snacks in the classrooms**. Please don't leave any wastes behind you. There is always a garbage can close by...

If you are the last student leaving a classroom, **don't forget to switch the lights off and close the windows**.

### Smoking policy

The whole building and the «patio» (front yard of the school, facing the rue Jean Macé) are **smoke-free areas**. There is a smoking area behind the building, next to the bicycle parking lot. Please make sure to smoke exclusively in that area.





## YOUR DAILY LIFE AT IGR-IAE RENNES

### Religion policy

IGR-IAE Rennes, as part of the University of Rennes, a public institution of higher education, is non-denominational and independent of any political, economic, religious or ideological influence.

The school ensures that the principle of religious neutrality is respected in its daily life, as well as in courses and examinations.

### Violence & Harrassment

IGR-IAE Rennes and the University of Rennes are committed to protect and defend the rights of students and staff who are victims of discrimination, harrassment and/or violence, through a range of adapted measures and targeted objectives.

At the University level, in case of need, please contact:

[harcelementsexuel-sse@univ-rennes.fr](mailto:harcelementsexuel-sse@univ-rennes.fr)

At IGR-IAE Rennes, you can reach the «**Violence and Harassment Prevention**» officers at:

[igr-sante@univ-rennes.fr](mailto:igr-sante@univ-rennes.fr)



## YOUR DAILY LIFE AT IGR-IAE RENNES

### University libraries & Study halls in Rennes

As a University of Rennes student, **you can access to every university library, especially the Law/Economics/Management library** located Place Hoche, next to the faculty of Economics, a 10mn walk from IGR-IAE Rennes.

Other quiet and pleasant places to study:

- **Study / Coworking rooms** at IGR IAE Rennes (see above “Study rooms”)
- **Les Champs Libres**, a public library located in a major cultural centre downtown, where a few seats are reserved for students
- **Bibliothèque Lucien Rose**, located 11 Square Lucien Rose, a 10-minute walk from IGR-IAE Rennes
- **Rose**, next to the parc du Thabor.

### Associative life

Associative life is at the heart of IGR-IAE Rennes. **Over 300 students** engage in one of the **15 students’ associations**, clubs and organizations, coordinating cultural, sports or charity events, working on long-term projects, fostering mutual assistance among students.

The BDE (Bureau des Étudiants ; students’ activities office) is in charge of strengthening the associative spirit, promoting communication between students, administrative staff and faculty, organizing the orientation weekend, setting up partnerships, creating and selling the yearly prom sweater, etc. They are your key contact about IGR-IAE’s associative life.



## YOUR DAILY LIFE AT IGR-IAE RENNES

**International students are encouraged to join one of the associations**, as it will give you the opportunity to take directly part in the school life and meet many students from different fields and nationalities. For instance, MAESTRO and Ressources+ are the closest to the fields of Management and Human Resources studies. But feel free to join any association of your liking!

Members of the associations are in constant contact with IGR-IAE students by email, or within the school itself. You will be regularly informed and invited to associative events. Check out the posters displayed in the building and discuss with French students regularly “on duty” in the entrance hall. Don’t hesitate to ask!



bde.igr@gmail.com



BDE IGR-IAE Rennes



Bde Igr-lae Rennes





# LIVING IN RENNES

## Health issues

The University of Rennes provides health services to the students:

- The **SSE** (Service de Santé Etudiante) is the university's student health service, where students can get general or specialized medical advice (contraception, nutrition, psychiatry, smoking, etc.). The SSE is located on Beaulieu Campus.
- There is a **joint social service** between the CROUS and the student health service: in case of financial difficulties, ask guidance from your student coordinator or program director.

**In case of emergency, please call 112 or 15** (see below "Emergency services")

## Administrative procedures

The CMI is your main contact for all administrative procedures: validation and renewal of your residence permit, help with health insurance registration, application for accommodation benefits, opening a bank account, support with the guarantor system... The CMI is located downtown at 1 place Paul Ricoeur.

[cmi.univ-rennes.fr/en](http://cmi.univ-rennes.fr/en)



## LIVING IN RENNES

### Sports and cultural activities

All University of Rennes' students can benefit from **more than 40 sport activities** with the SIUAPS, («inter-university physical activity and sport service»). Available after receiving your student card.

[siuaps.univ-rennes.fr](http://siuaps.univ-rennes.fr)

Located on Beaulieu campus and run by the Cultural center of the University, **the Diapason hosts exhibitions, concerts, theater, cinema sport activities...**

[diapason.univ-rennes.fr](http://diapason.univ-rennes.fr)

**Plenty of great events take place all year long in Rennes.** The most comprehensive presentation is at [agenda.rennesmetropole.fr](http://agenda.rennesmetropole.fr)

Events of interest for you are highlighted in a **dedicated group on Teams**, that you can access as soon as your Sésame account is validated.



[cmi@univ-rennes2.fr](mailto:cmi@univ-rennes2.fr)



@CMIRennes



CMIRennes

☎ 02 22 51 44 20



TOURIST INFORMATION CENTER

1 rue Saint-Malo

☎ 0 891 67 35 35

[infos@destinationrennes.com](mailto:infos@destinationrennes.com)

[www.tourisme-rennes.com](http://www.tourisme-rennes.com)





## LIVING IN RENNES

### Safety advice

By now, you are starting to find your way around Rennes and enjoy our nice September weather. We would like to draw your attention on safety issues and give some general advice in that matter. Rennes is generally a safe city, but **theft or crime can occur anywhere**. We urge you to please be extra careful during your time here in France and during your travels in general.

A few tips for you:

#### When going out at night:

- **Avoid carrying big amounts of cash (€100 maximum)** around with you. For example, plan how much money you need for a night out and leave your card at home. If you pay by card, be careful to type your pin code discreetly. If you use your card for contactless payment, be even more careful. Don't carry your card in your back pocket
- **Be careful with your phone** as these can be easily and quickly snatched out of one's hand



## LIVING IN RENNES

### When travelling:

- Be aware of your surroundings and if anything looks suspicious, **trust your instincts and get to safety**. Be extra careful in train stations, metro and airports where foreigners can sometimes be targeted. If you carry a bag, always keep it close to you and never leave it unattended. Make sure to close it when you are not using it. Backpacks can be carried in the front of you when travelling.
- If you do not carry a bag, **keep your wallet and personal items in your front pockets** (you can put your hands in your pockets to prevent any pickpockets, this is especially true for big cities like Paris).
- Keep a **copy of your passport** and visa, ID cards, student card and credit cards at home or scan them and email them to yourself in case they are lost or stolen. These can be complicated to be renewed, so leave them at home unless you absolutely need them.
- Also, keep your **bank information** easily accessible in the case of a stolen card.
- Keep **important documents, cards and cash** on yourself and **not in your luggage**.

### At the student residence (CROUS):

Make sure to close your windows when you leave. Don't leave your valuable belongings in plain view when not in use.





## LIVING IN RENNES

### Transports

Bus and subway (metro) lines are operated in Rennes by **the «STAR»** company!

The STAR transport card is named **Korrigo**, with which you can charge single tickets (**€1.70 for one hour**) or monthly/yearly subscriptions.

A bus/metro map is handed out on Orientation Day, along other documents.

The STAR company **also rents bikes** either to ride all year or for a few hours/days. You can find around twenty STAR bike stations in Rennes.

[www.star.fr](http://www.star.fr)

### Other transports

**InOui** is the main high-speed train offer you will find in France, but it can be quite expensive. [www.sncf-connect.com](http://www.sncf-connect.com)

**OuiGo** (train) and **OuiBus** (bus) are the best ways to travel cheaply all over France. More information on:

- [www.ouigo.com](http://www.ouigo.com)
- [fr.ouibus.com](http://fr.ouibus.com)
- [www.flixbus](http://www.flixbus)

**Blablacar**: This is the most famous carpooling website in France. You can book your seat easily online at: [www.blablacar.fr](http://www.blablacar.fr)





## LIVING IN RENNES

### Buying food

Buying food in a new country can be quite challenging! We will give you some tips below and a few addresses, but feel free to explore and add new places as new stores open frequently:

- Supermarkets: the largest supermarkets are located on the outskirts of Rennes, easily accessible by bus. Downtown, you will find **small and middle-sized stores**.
- Organic grocery stores: several organic grocery stores are available in Rennes, like Scarabée Biocoop (131 rue de Paris) or Ma Joyeuse Épicière (40 rue d'Antrain), both within a **15-mn walk** from IGR-IAE Rennes

### Specialized groceries

- Asian food: **Belasie** (30 rue de la Donelière, 35000 Rennes) or **Piment Rouge**
- (16 Rue de la Rigourdière, 35510 Cesson-Sévigné)
- Italian food: **Dolce Italia** (11 Rue Jules Simon, 35000 Rennes) or **La Boutique Italienne** (Les Halles Centrales, Rue Jules Simon, 35000 Rennes)
- Oriental food: **La Joie Exotique** (13 Mail François Mitterrand, 35000 Rennes)

### Open-air markets

- If you are looking for fresh vegetables, seafood, or if you want to taste the famous **Galette Saucisse** (hot-dog à la rennaise...) the best place is **Le Marché des Lices** (2nd market of France) every **Saturday morning**.
- There are markets each day in all Rennes' neighborhoods. «**Les Halles Centrales**», is an indoor food market held every day from 7am to 7pm.
- **Le Marché du Blossne** will be the ideal venue if you are looking for ethnic food.



## LIVING IN RENNES

### Looking for affordable goods for your daily life?

#### Flea Markets:

You will find lots of flea markets throughout the year in Rennes called “braderies”, “vide-greniers” or “brocantes” in French. You will probably see lots of posters advertising them in Rennes and countless more online, especially in the months of September and October.

- **Les Puces de Rennes:** a monthly sale which takes place on the second Sunday of each month on the Mail François Mitterrand;
- **The Braderie of the La Touche** district;
- Braderies **Cleunay and St-Martin** neighborhoods;
- **The Braderie of the St Héliér** neighborhood.

#### Other tips

- **Gify:** located rue Lebastard in downtown Rennes, this is one of the cheapest solutions when shopping for affordable goods
- **Leboncoin:** is a French website where you can find any kind of second-hand object. Books, shoes, furniture, accommodation, a bike...
- **Recupcampus:** run by University students, this could be an opportunity to find basic material you need
- **La Belle Déchette:** a thrift shop selling second hand material, clothes, decoration...



## LIVING IN RENNES

We know how difficult it is to learn French, and to understand French people when they talk to each other, especially when you realize that they speak a whole other language in the form of French acronyms and initialisms, which can be a minefield! Here are the most common ones, in a university and daily life context.

Let us know if you are tricked by other ones!



## LIVING IN RENNES

APL	Aide Personnalisée au Logement (Government Housing Grant)
BU	Bibliothèque Universitaire (University Library)
CAF	Caisse d'Allocations Familiales (Family Benefit organization) (see APL)
CC	Contrôle Continu (Continuous Assessment)
CDD	Contrat à durée déterminée (temporary contract)
CDI	Contrat à durée indéterminée (permanent contract)
CEAM	Carte Européenne d'Assurance Maladie (European Health Insurance Card)
CM	Cours Magistral (Lecture / Course)
CMI	Centre de Mobilité Internationale (International Mobility Centre, with information services on all administrative procedures: health, accommodation,
CMU	Couverture Maladie Universelle (Universal Health Coverage Scheme)
CPAM	Caisse Primaire d'Assurance Maladie (Health Insurance Agency)
CROUS	Centre des Œuvres Universitaires et Scolaires (Student welfare organization)
DALF / DELF	Diplôme Approfondi de Langue Française and Diplôme d'Etudes en Langue Française (Advanced Certificate of French Language Proficiency)
DARI	University of Rennes's International Affairs Department
DU	Diplôme Universitaire (University-level diploma)
ECTS	European Credit Transfer System
ENT	Environnement Numérique de Travail (Virtual Learning Environment)



# LIVING IN RENNES

ESN	Erasmus Student Network
FLE	Français Langue Étrangère (French as a Foreign Language)
MCC	Modalités de Contrôle des Connaissances (Knowledge assessment regulations)
RU	Restaurant Universitaire (University Canteen)
SAMU	Service d'Aide Médicale Urgente (Emergency Medical Services)
SCD	Service Commun de Documentation (Library Services)
SNCF	Société Nationale des Chemins de fer Français (French National Railway Company)
SSE	Service de Santé Etudiante (University's student health service)
TCF	Test de Connaissance de Français (French Language Test)
TD	Travaux Dirigés (Seminar)
TER	Train Express Régional (Regional Express Train)
TGV	Train à Grande Vitesse (High-Speed Rail Service)
TP	Travaux Pratiques (Practical exercises)
UE	Unité d'Enseignement (Academic Module)
UFR	Unité de Formation et de Recherche (Academic Department)
VLS-TS	Visa Long Séjour valant Titre de Séjour (LongStay Visa Valid as a Residence Permit)
A+	A plus ! (See you later)



# LIVING IN RENNES

## Emergency services

### EUROPEAN EMERGENCY TELEPHONE NUMBER: 112

Commun European emergency telephone number for the police, the firefighters and ambulance services. It can be called from any European country. **Remember it!**

### INDIVIDUAL EMERGENCY TELEPHONE NUMBERS:

- **POLICE:** 17
- **FIRE AND RESCUE:** 18
- **AMBULANCE/SAMU:** 15

### RENNES UNIVERSITY HOSPITAL (CHU): +33 2 99 28 43 21

Hôpital de Pontchaillou

2, rue Henri Le Guilloux, 35000 Rennes

### 24/7 SOS MÉDECINS (out-of-hours doctor service): +33 2 99 53 06 06

106 Rue Eugène Pottier, 35000 Rennes

### SSE (student health service): +33 2 23 23 55 05

Campus Beaulieu - Building 21

### OUT-OF-HOURS PHARMACY/DRUGSTORE: 3237

### POLICE STATION: +33 2 99 65 00 22

After 7pm, go to the police station

22, boulevard de la Tour d'Auvergne, 35000 Rennes

### LOST PROPERTY: +33 2 23 62 18 72

16, rue Jean Marie Huchet, 35000 Rennes



## SOCIAL MEDIA

Follow us on our social media: **LinkedIn, Instagram & Youtube**



igriae



I GR-IAE-Rennes



IAERennes35



# se révéler

se révéler  
se révéler



11, rue Jean Macé - CS 70803- 35708 Rennes Cedex 7

tél. : 02 23 23 77 77

mail : [igriae@univ-rennes.fr](mailto:igriae@univ-rennes.fr)