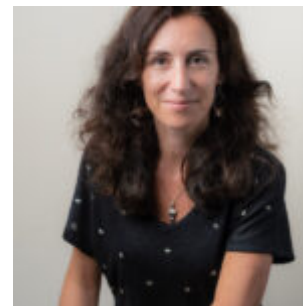


Emmanuelle FROMONT

Associate Professor



Présentation

Program director:

- [Master Comptabilité – Contrôle – Audit](#)
- [Master CGAO, parcours Systèmes d'Information et Contrôle de Gestion](#)
- [Licence 3 Gestion, parcours Finance et Contrôle de Gestion \(FCG\)](#)

My research focuses mainly on studying the risk associated with financial products such as hedge funds and pension funds but also on the creation of shared value. My studies are mainly quantitative

> **Laboratoire de recherche** : CREM UMR CNRS 6211

Thèmes de recherche

Hedge funds

Investment funds

Extreme values

Shared Value

Activités pédagogiques

Teaching

- Financial analysis
- Finance
- Hedge Funds
- Financial Markets
- International Capital markets
- Accounting
- Consolidation